

# INTO ~~THE~~ WOODS



**DIST  
RICT**  
DISTRICT THEATRE COLLECTIVE

 **SONDHEIM FEST 2013**

# INTO ~~THE~~ WOODS

JANUARY 29 - FEBRUARY 2, 2013 | GAS STATION ARTS CENTRE

Music and Lyrics by **STEPHEN SONDHEIM**  
Book by **JAMES LAPINE**

Originally directed on Broadway by **JAMES LAPINE**

Orchestrations by **JONATHAN TUNICK**

Original Broadway production by  
Heidi Landesman Rocco Landesman Rick Steiner  
M. Anthony Fisher Frederic H. Mayerson Jujamcyn Theaters

Originally produced by the Old Globe Theater, San Diego, Ca.

## Cast

(in order of appearance)

<b>Narrator</b>	Mackenzie Wojcik
<b>Cinderella</b>	Julie Lumsden
<b>Jack</b>	Nelson Bettencourt
<b>Jack's Mother / Granny</b>	Charlene Van Buekenhout*
<b>Baker</b>	Colin Peterson
<b>Baker's Wife</b>	Aubree Erickson*
<b>Cinderella's Stepmother / Cinderella's Mother</b>	Nicki Kirton
<b>Lucinda</b>	Paige Pooley
<b>Florinda</b>	Robyn Pooley
<b>Little Red Ridinghood</b>	Haley Vincent
<b>Witch</b>	Laura Olafson*
<b>Mysterious Man</b>	Kevin Anderson
<b>Wolf / Cinderella's Prince</b>	Sam Plett*
<b>Steward / Rapunzel's Prince</b>	Darren Martens
<b>Rapunzel</b>	Emma Stefanchuk

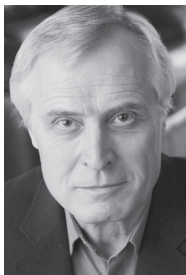
## Crew

<b>Director</b>	Connie Manfredi
<b>Producer</b>	Ryan Segal
<b>Musical Director</b>	Andrew St. Hilaire
<b>Stage Manager</b>	Brett Mikuluk
<b>Production Coordinator</b>	Cari Simpson
<b>Wrinkler/Coach for Mr. Wojcik</b>	Joshua Balzer
<b>House Manager</b>	Katherine Johnston

Musical accompaniment created by Andrew St. Hilaire

INTO THE WOODS Is presented through special arrangement with Music Theatre International (MTI). All authorized performance materials are also supplied by MTI. 421 West 54th Street, New York, NY 10019  
Phone: 212-541-4684 Fax: 212-397-4684 [www.MTIShows.com](http://www.MTIShows.com)

\* Appears with permission of Canadian Actors Equity Union



Kevin  
Anderson



Nelson  
Bettencourt



Charlene  
Van Buekenhout



Aubree  
Erickson



Nicki  
Kirton



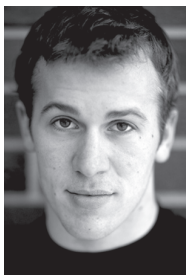
Julie  
Lumsden



Darren  
Martens



Laura  
Olafson



Colin  
Peterson



Sam  
Plett



Paige  
Pooley



Robyn  
Pooley



Emma  
Stefanchuk



Haley  
Vincent



Mackenzie  
Wojcik



Ryan  
Segal

Connie  
Manfredi



Andrew  
St. Hilaire



Brett  
Mikuluk

# Welcome to the woods!

Producing Sondheim is no easy feat, so when the Royal Manitoba Theatre Centre announced that Stephen Sondheim would be the Master Playwright of choice for 2013, we were thrilled if not a bit apprehensive.

As a relatively new company, District Theatre Collective looks for theatre that will provoke, delight and excite ourselves and our audience. So why *Into the Woods*? Over the past few weeks Winnipeg audiences have had the chance to be fully immersed in the work of a musical theatre legend and *Into the Woods* may be one of Sondheim's most well-known properties. We didn't choose this musical because of its familiarity, but primarily because of the multitude of opportunities the play provides for creative interpretation. While traditionally it is staged in a lavish fairy-tale setting, we knew from the very beginning that this was not the way we wanted to tell the story.

At the same time, however, we wanted to honour the work that Sondheim and Lapine carefully crafted. Our goal in the end was to simplify as much as possible – to tell the story with as little means as we could, to strip away all artifice and ornament and rely on the fundamental magic of theatre.

As we explored this sensibility throughout the rehearsal process, we kept one question firmly in our minds: How do we protect our children and can we actually protect them? Using this as our axis point, we have made a conscious decision to focus on the role family plays in each of the character's lives, and by extension, our lives.

With the most important relationship in the show being between parent and child, we decided to stray from the traditional narration of *Into the Woods* and tell the story through the eyes and imagination of a 10-year old boy. The stories of The Baker, Cinderella, Jack, Rapunzel, Little Red Ridinghood and The Witch have begun to take on new meaning as we imagine them stemming from the mind of a child. A child's wishes, dreams and fears are much more innocent – less changed by life experience, pain and knowledge of the world.

Using this perspective has helped us understand the responsibility that we as adults have to the next generation. Having a young boy lead our characters through their journey has added such a rich dimension to the story, a constant reminder of the reason we are presenting this piece in the first place. Children listen.

---

## THANK YOU

Debbie Gray, Leon A. Brown Ltd., Jonnie's Sticky Buns, Gas Station Arts Centre: Todd Drader and Nick Kowalchuk, Royal Manitoba Theatre Centre, MasterPlaywright Festival: Chuck McEwan, Winnipeg Folk Festival, Winnipeg Studio Theatre, Paul DeGurse, Tatiana Carnevale, Chris Coyne, Alison Loat, Nadine Pinette, Aaron Pridham

The videotaping or other video or audio recording of this production is strictly prohibited  
**Please turn off all cell phones and electronic devices**